

*A Must-Have California Native Plant!*

# Snowberry

*Symphoricarpos albus*



**Description:** The **Snowberry** has delicate flowers which are attractive to bees, butterflies and other pollinators. The striking white berries that follow add interest to the garden and provide food for birds and other animals.



**Light:** Part or Full Shade



**30** species of butterflies and moths can lay eggs on this plant.



**Featured Butterfly:** The **Variable Checkerspot** butterfly can be seen fluttering in the garden from April through June. Its caterpillars rest for the winter in the leaf litter below the plants they are eating. Help them by leaving the leaves in your garden!

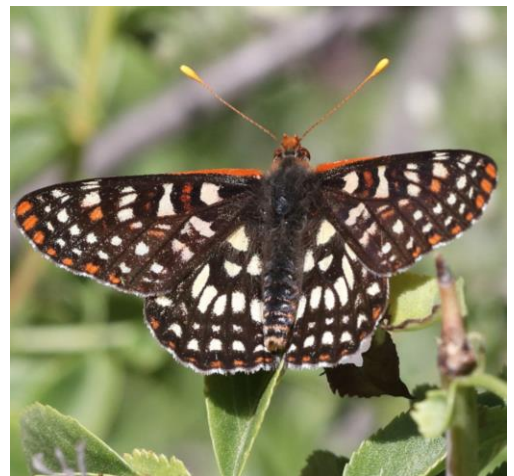
**Keystone Plant:** This California native is a “must have” (host) plant for caterpillars, which, in turn, are the “must have” food for baby birds.

**Discover more at [BringingBacktheNatives.net](http://BringingBacktheNatives.net)**

*Images: Snowberry © Steve Kelley; Variable Checkerspot caterpillar © catchang; Variable Checkerspot Butterfly © John Kehoe (all Creative Commons some rights reserved (CC-BY-NC) via iNaturalist.org)*

*Design: Jennifer B. Dirking – EcoGardenista.org*

Permission is given for these signs to be freely distributed, but they cannot be sold.



Calscape.org



Scan here  
for details

