

A Must-Have California Native Plant!

Beach Strawberry

Fragaria chiloensis



Description: The **Beach Strawberry** grows well in sandy soil and makes a lovely groundcover. It has lush green foliage, white flowers in spring, and delicious fruit in the summer. It is a great habitat plant as all parts are edible.



Light: Partial Shade / Sun



58 species of butterflies and moths can lay eggs on this plant.



Featured Butterfly: The **Two Banded Checkered Skipper** butterfly is shown ‘mud puddling,’ gathering salts and amino acids from damp or muddy soil, a great feature in a habitat garden.

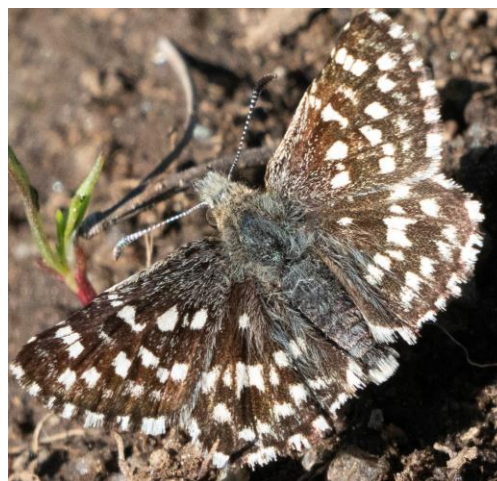
Keystone Plant: This California native is a “must have” (host) plant for caterpillars, which, in turn, are the “must have” food for baby birds.

Discover more at BringingBacktheNatives.net

Images: Strawberry © ya2n; Hoary Duskywing caterpillar-similar to skipper © Jeff Eickwort; Two Banded Checkered Skipper © catchang (all Creative Commons some rights reserved (CC-BY-NC) via iNaturalist.org)

Design: Jennifer B. Dirking – EcoGardenista.org

Permission is given for these signs to be freely distributed, but they cannot be sold.



Calscape.org



Scan here
for details

