

A Must-Have California Native Plant!

Western Serviceberry

Amelanchier alnifolia



Description: The **Western Serviceberry** is a beautiful shrub, bearing white flowers in early summer followed by edible berries that taste similar to blueberries. It is a great habitat plant that feeds birds, pollinators and butterflies.



Light: Full Sun / Part Shade



77 species of butterflies and moths can lay eggs on this plant.



Featured Butterfly: The tiny **California Hairstreak** has a wingspan of just over one inch. Watch for these tiny butterflies fluttering in your garden from April through September.

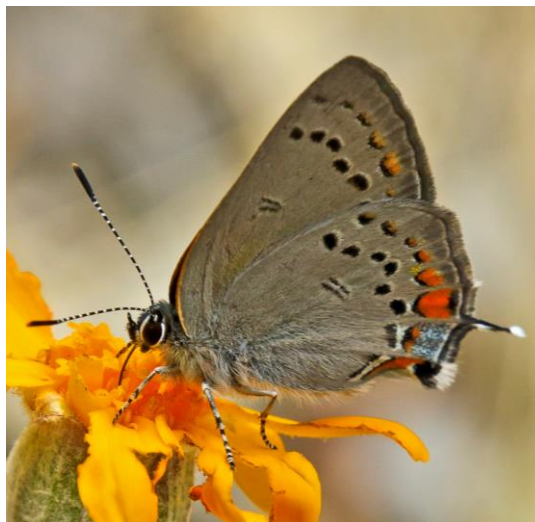
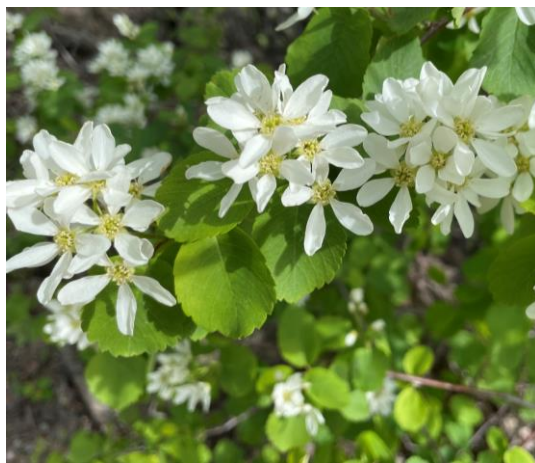
Keystone Plant: This California native is a “must have” (host) plant for caterpillars, which, in turn, are the “must have” food for baby birds.

Discover more at BringingBacktheNatives.net

Images: Western Serviceberry © Derek Armstrong; Hairstreak pupa © Kathy Kramer; California Hairstreak © Jerry James (all Creative Commons some rights reserved (CC-BY-NC) via iNaturalist.org)

Design: Jennifer B. Dirking – EcoGardenista.org

Permission is given for these signs to be freely distributed, but they cannot be sold.



Calscape.org



Scan here
for details

